



ILIAD 62



ILIAD 62

The ILIAD 62 is the ultimate fuel-efficient power catamaran that will take you further. Featuring the option for an open or enclosed flybridge, the ILIAD 62 strikes an impressive silhouette and boasts one of the longest range capabilities in her class.

The motor yacht has extensive choice of spacious alfresco and interior living areas, a remarkable flybridge for entertaining, decadent foredeck lounges, and exquisite accommodations that are finished to the highest standards.

Perfect for extended voyages, the exclusive owner's hull can also incorporate a laundry, workshop, office and even separate crew quarters.

MAIN DIMENSIONS

LENGTH:
18.95 M | 62 FT

BEAM:
8.19 M | 27 FT

DRAFT AT FULL LOAD:
1.5 M | 4.9 FT

DISPLACEMENT (LIGHTSHIP):
40,000 KG | 88,185 LBS

RANGE:
3,500 NM

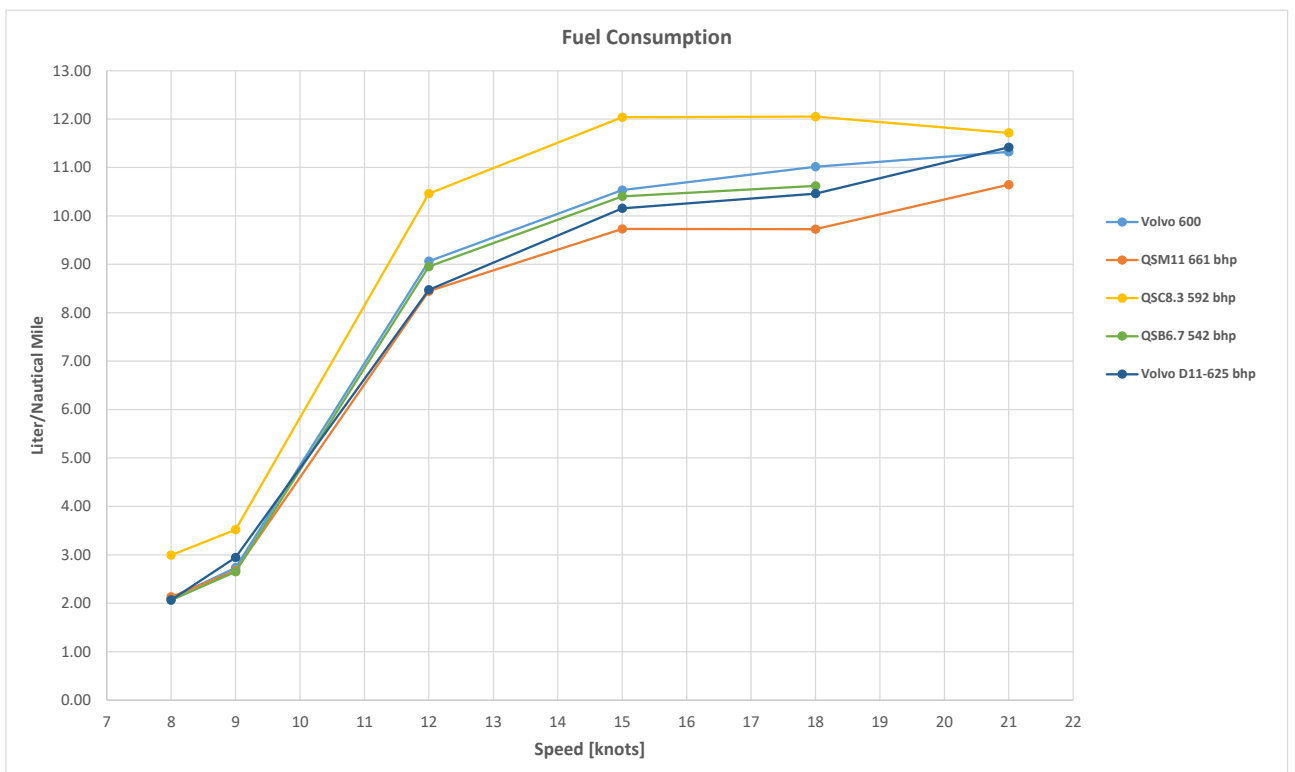
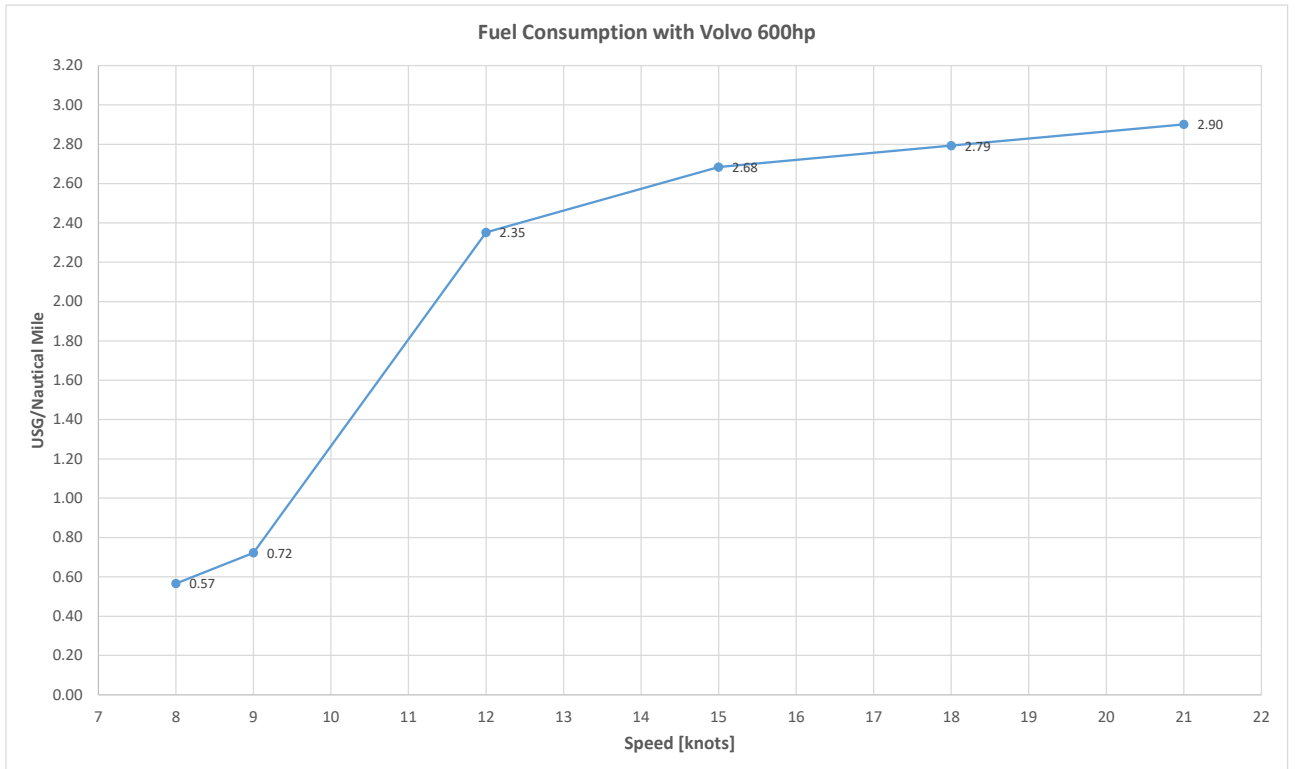
FUEL TANKS CAPACITY:
6,100 L | 1,611 GAL

WATER TANKS CAPACITY:
1,200 L | 317 GAL

HOLDING TANKS CAPACITY:
GREY 500 | L 132 GAL
BLACK 500 | L 132 GAL

CERTIFICATION:
CE A-12 | CE B-12
CE C-20 | CE D-30

CONSTRUCTION BUILT TO
CE AND ABYC GUIDELINES.



STANDARD EQUIPMENT

STRUCTURAL MATERIALS

- Hull bottom and sides in sandwich of GRP and PVC core (density 80-100-130kg/m3).
- Main deck and deckhouse in sandwich of GRP and PVC core (density 60 kg/m3).
- Hull lamination all in vinylester resin.
- All other laminates in polyester isophtalic resin.
- All laminates built with hand lay-up of surface layers, then infusion of main laminate.
- GRP stiffeners laminated on PVC formers by hand lay-up directly to the shell laminate.
- Lower deck structural cabin sole in GRP sandwich.
- Watertight and structural bulkheads in sandwich of GRP and PVC core (density 80 kg/m3).
- White gelcoat (DSM).
- Hulls with structural keel.
- All tanks in aluminium 5052.
- All GRP non-skid areas molded into the laminate.

ENGINE ROOM AND MARINE SYSTEMS

- 2 x Volvo D8 600 HP
- Generator Onan 17.5kw
- 2 x electric bow thrusters side power.
- Air-conditioning system Climma CWS Aquacontrol 96,000 btu
- 4 x 400 watt solar panels; glass-framed panels includes regulators/charging system (on hardtop)
- 4 x interceptors
- 2 x engine rooms with access from hatch on main deck.
- ER insulation materials Pyrotek Sorberbarrier 50/4, waterproof inner surface. Wall cladding of perforated aluminium sheet.
- 2 x shafts in duplex steel. GRP stern tubes. Tide Marine shaft seals.
- 2 x rudders in stainless steel 316L.
- 2 x propellers (Cu3), 4 fixed blades.
- Seastar electric hydraulic steering.
- Centek mufflers for main engines and generator.
- 2 x air blowers for ER forced ventilation.
- 4 x fire dampers with remote shut-off.
- Moisture eliminators (2) at ER ventilation inlets.
- Automatic/Manual fire-suppression system (Seafire), heat sensors with alarm.
- Racor fuel filters for main engines and generator.
- Fuel transfer pump.
- Fuel hose, Trident 365.
- 8 x bilge pumps 24V 2000 GPH, automatic, with high-water alarm.
- 1 x 80 lts/21gal water heater.
- 2 x freshwater pump (Headhunter).
- 3 x grey water sump pump and tank.
- 2 x grey water macerator pump.
- 2 x black water macerator pump.
- Shore freshwater connection at stern.
- Mooring capstans (2) 1500 W 24V.
- Hydraulic tender-lift extendable swim platform, net capacity 450kg / 990 lbs.

NAVIGATION AND COMMUNICATION

- Autopilot with control head (Raymarine p70).
- 2 x multifunctional display Raymarine Axiom Pro 16" (flybridge helm).
- Raymarine fishfinder sensor CP100 + CPT120.
- Radar Raymarine Quantum Q24C.
- 2 x Raymarine day/night docking camera (at cockpit ceiling, aft-facing).
- Raymarine i70, echo sounder, GPS Raymarine RS130, VHF (with antenna), AIS (with antenna), including Raymarine backbone cables & engine room cameras.
- Chain counter (flybridge).
- Horn.
- Searchlight.

ELECTRICAL SYSTEM

- Colour-coded marine wiring.
- Bonded electrical system with ground plate.
- 24VDC, 220/110VAC ship systems.
- Engine AGM gel-type start batteries, 150 Ah.
- Generator AGM gel-type start battery, 150 Ah.
- 24V 800a/h lithium house bank.
- Inverter/Charger Victron Quattro 24/5000/120.
- Converter Victron Orion 24/12-40.
- Circuit breakers and fuses BEP.
- Marine Lighting interior/exterior lights. LED lights.
- S/S navigation and anchor lights.
- Main distribution switchboard panels AC/DC.
- 2 x shore power connection 32A.
- 220/110V sockets throughout.
- Vimar switches.

EXTERIOR OUTFITTING

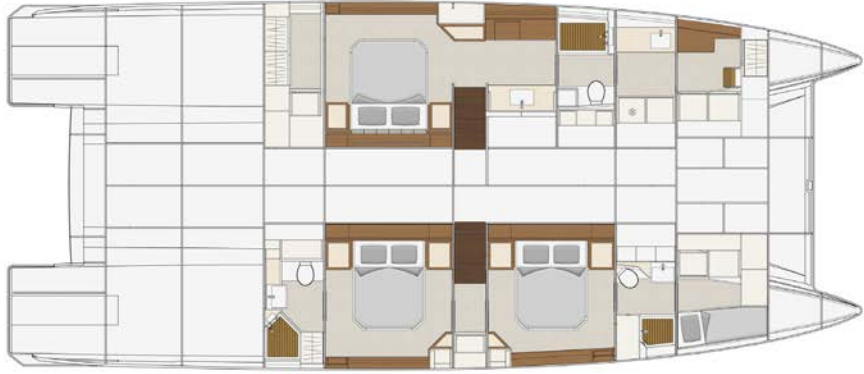
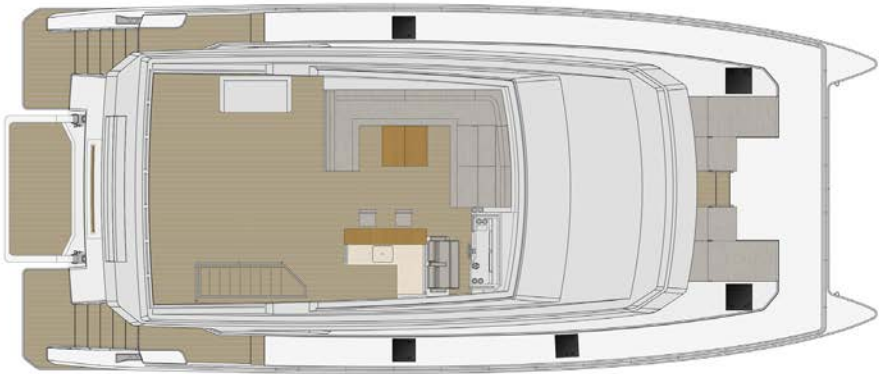
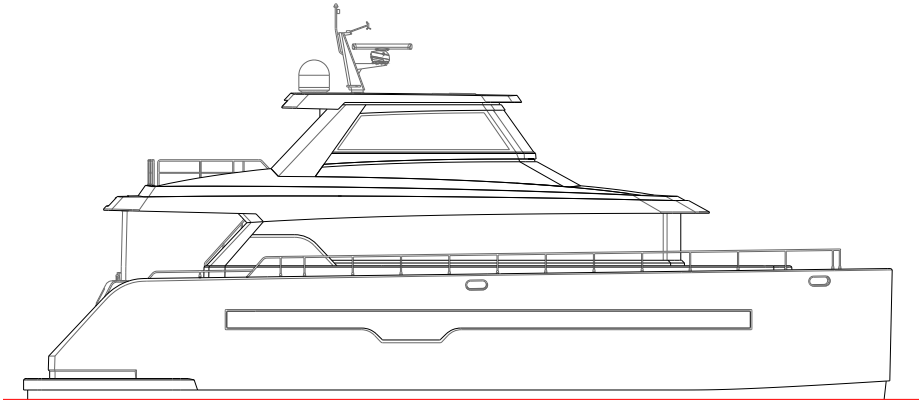
- 9 x hull portlights with flyscreen.
- 3 x deck hatches Lewmar Mitre flush hatch, size 44. With flyscreen and shade.
- 2 x deck hatches Lewmar Mitre flush hatch, size 60. With flyscreen and shade.
- Deckhouse and hull windows in heat-strengthened laminated glass.
- Cockpit sliding door in aluminium frame (black).
- Foredeck door in aluminium frame (black).
- 2 x stern stainless-steel gates.
- 8 x S/S mooring cleats 13", 2 x S/S bollards 17".
- Vertical windlass, 3000W 24V with foot switch and remote controls.
- S/S bow roller and chain stopper for anchor.
- S/S 316L handrails on main deck and fly bridge. Side gates.
- Deckwash freshwater outlet (3 points: cockpit, chain locker, flybridge).
- Hot/cold shower faucet at swim platform.
- 1 x Swissway swim ladder with Carina railing telescopic 3+2 in transom hidden and flush mounted.
- GRP hardtop with navigation mast.
- Flybridge helm station with double Besenzoni Dragonfly pilot seat.
- Flybridge GRP-moulded sofas with interior storage.
- Flybridge GRP-moulded storage locker.
- Flybridge GRP-moulded bar cabinet, with sink and water faucet, Solid Surface top (LG HI-MACS), teak bar top, stools.
- Flybridge windscreen in S/S 316L and dark acrylic.
- Helm station engine controls and displays.
- All outdoor cushions in Sunbrella fabric.
- 6 x underwater lights at stern.
- Synthetic teak deck (cockpit, fly stairs and swim platforms), Flexiteek.
- Synthetic teak deck (fly bridge), Flexiteek.
- Aft cockpit dining table teak, with wings. Open: 220x90 cm.
- Flybridge dining table teak, with wings. Open: 200x80 cm.
- Anchor (Delta HHP 65kg) + 100m chain (12mm grade AM2).
- 6 x 12" cylindrical fenders. Mooring lines.
- Anti-fouling paint.
- Propspeed paint for rudders and propellers.
- Drawer fridge 144 L (flybridge).
- Ice maker (flybridge).

INTERIOR OUTFITTING

- Stainless steel 316L interior handrails.
- Solid surface (LG HI-MACS) galley and bathroom countertops.
- BLUM drawer systems and hinges.
- Parquet or laminate flooring on main deck. Carpet on lower deck cabins. Teak flooring in all bathrooms and showers.
- Timber veneer furniture with honeycomb core.
- Ceiling and wall panels in synthetic leather (Soffkin).
- Sofas and seats upholstery in synthetic leather (Ultraleather). Option of genuine leather.
- Sliding dinette table.
- Manual pleated blinds on the lower deck with roller blinds in the bathrooms.
- Memory foam mattresses.
- Galley stainless-steel sink with water faucet (hot/cold water).
- Air extraction fans in all bathrooms.
- Electric toilets with macerator.
- Ceramic washbasins.
- Bathroom and shower fixtures.
- Separate shower stall with teak grating.
- Fusion Entertainment system (2 speakers salon, 2 speakers cockpit, 2 speakers flybridge, amplifier, subwoofer, flybridge remote control panel)
- TV electric lift in saloon suitable for 55" TV (television not included).
- 3 x double draw fridge / freezers (144 L each)
- Hob (4-unit induction).
- Hood above hob.
- Combination oven/microwave 60cm.
- Wine cooler.
- Dishwasher 60cm.
- Electric grill on flybridge with cover.
- Motorized blinds on the main deck
- Combination washer/dryer
- Interior helm station (includes pilot seat, navigation instruments, 2 x 12" Raymarine Axiom Pro monitors, 1 x Roca windshield wipers).

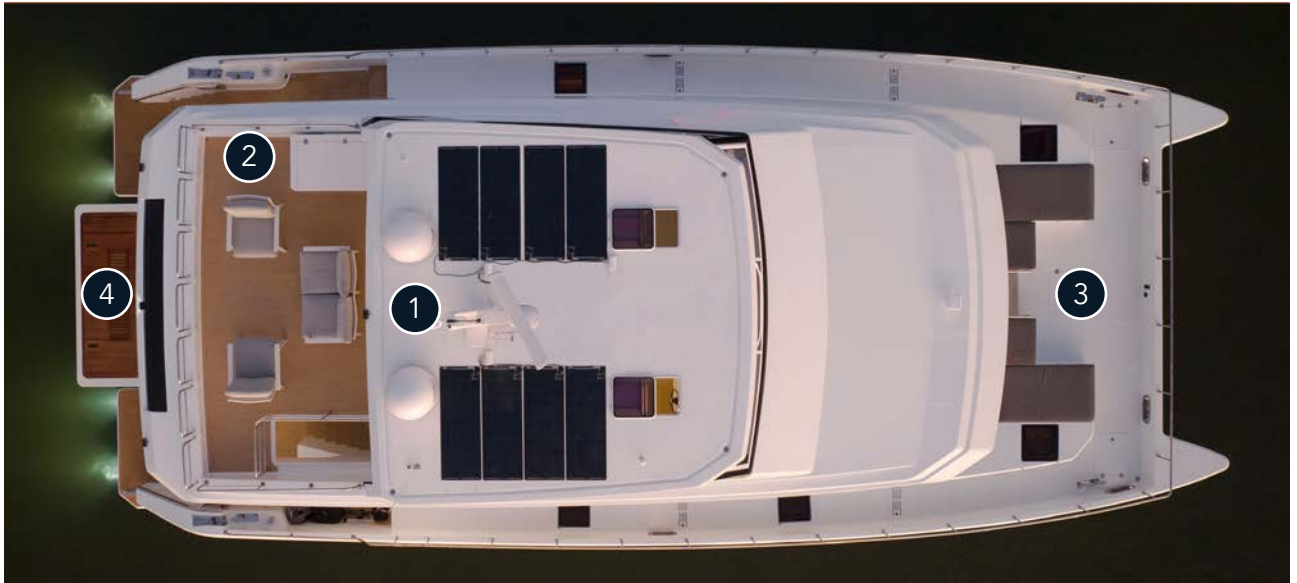
OTHER

- Transport cradles.
- Launching & export formalities.
- Shrink wrapping in preparation for shipping.
- Owner's Manual.



* CONTACT YOUR DEALER FOR MORE LAYOUT OPTIONS

EXTERIOR



- 1** Standard 4 x 400w framed solar panels fitted to hardtop.

2 Open or enclosed flybridge option, with vast aft deck ideal for additional living with moveable lounge furnishings or for tender and toy storage.
- 3** Spacious fore deck with direct saloon access via full door between deck lounges.

4 Hydraulic tender-lift extendable swim platform included as standard, net capacity 450 kg / 990 lbs.



EXTERIOR | OPEN FLYBRIDGE

- 1** Expansive open flybridge with optional adjustable clears
- 2** Large hull windows offering an abundance of natural light in the lower cabins.
- 3** Spacious cockpit that connects seamlessly with interior.
- 4** Large transom lockers for watersports/diving equipment.

FLYBRIDGE | OPEN VERSION



- 1 Generous Sunbrella lounge seating with fold-out teak dining table.
- 2 Helmstation with outstanding visibility
- 3 Comprehensively equipped bar with stools, sink, teak bar top, 144 L draw fridge, electric grill/BBQ and an ice maker.
- 4 Flexiteek exterior flooring in choice of colors and caulking.



FLYBRIDGE HELM | OPEN VERSION

- 1 Flybridge helm with 2 multifunctional displays Raymarine Axiom Pro 16".
- 2 Double Besenzoni Dragonfly pilot seat.

EXTERIOR | ENCLOSED FLYBRIDGE VERSION



- 1 Fully enclosed flybridge for air conditioned comfort.
- 2 High freeboard giving maximum bridge deck clearance and improved comfort in unfavourable weather conditions.
- 3 Forward opening door from main saloon to foredeck, giving great natural airflow through the interior.
- 4 Expansive saloon windows for natural light and panoramic views. Affords excellent visibility when driving from the lower helm.



FLYBRIDGE | ENCLOSED VERSION

- 1 Sliding door to fully enclose flybridge for air-conditioned comfort.
- 2 Additional outdoor fixed lounge with underseat storage.
- 3 Optional flybridge hydraulic crane, Besenconi G509, capacity 480kg/1,058 lbs, (for open and enclosed versions).

EXTERIOR | ENCLOSED FLYBRIDGE VERSION

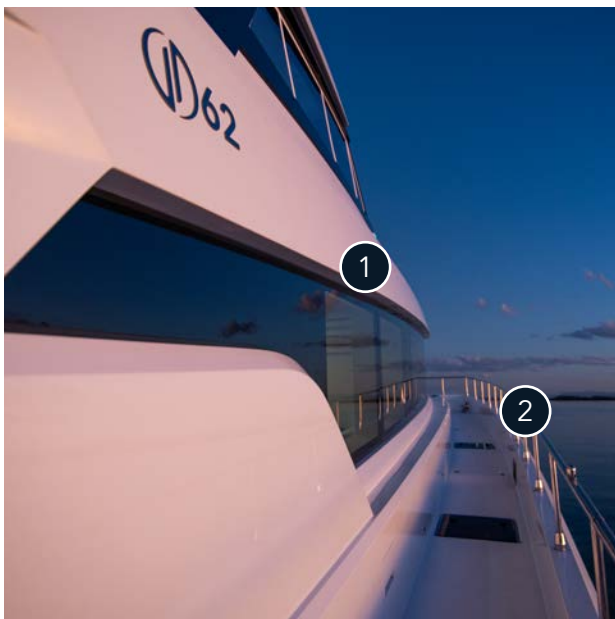


1 Panoramic windows that open for natural ventilation when desired.

2 Large lounge configurations available in variety of upholstery options. Sofa/table can be also constructed to convert to a bed for additional temporary cabin option.

3 Expansive bar with draw fridge, storage and ice maker.

4 Sole helm station (no lower helm required if larger internal saloon lounge space is preferred). Comfortable helm chairs suitable for long range cruising.



EXTERIOR

1 Wide side decks (70cm/27") with handrail on superstructure and high handrail on bulwark.

2 Raised bulwark 1ft off the deck for increased safety when moving around the boat.

AFT COCKPIT



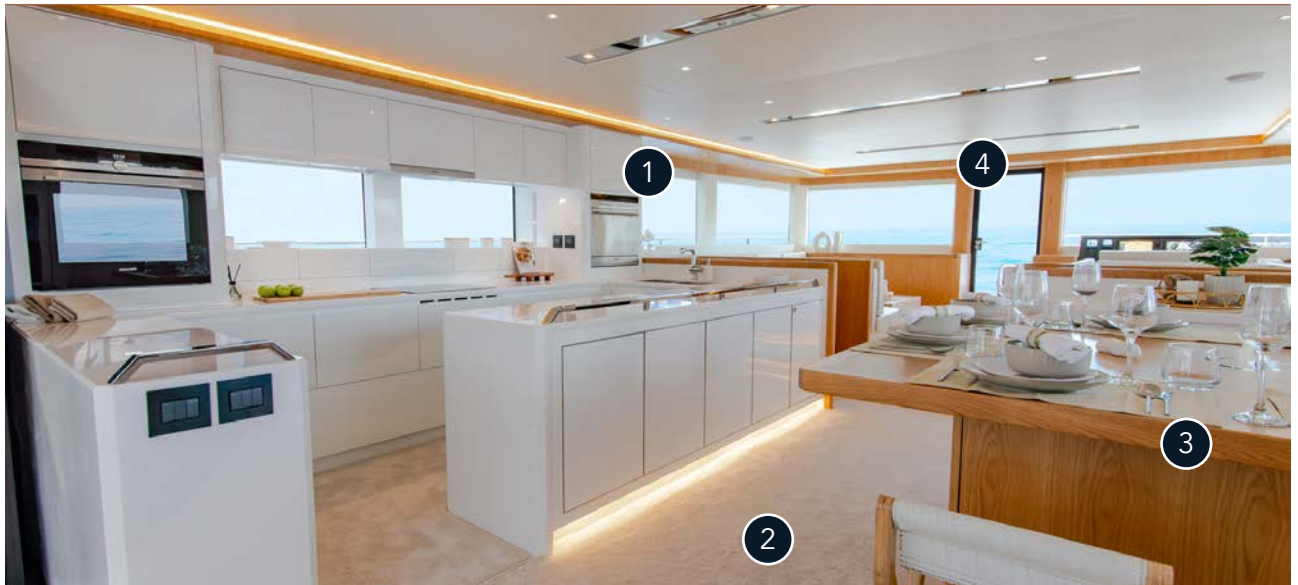
- 1 Two large storage hatches under the floor in the centre of the cockpit with 1m/3ft cubed storage space each.
- 2 Large fold-out teak cockpit table that can accommodate 10 people.

- 3 Engine room access through cockpit deck hatches.

Not in picture: Servery/bar flowing from the galley into the cockpit, and speakers in cockpit for Fusion entertainment system.



INTERIOR



Note: The ILIAD 62 is highly customizable. This document contains images of various versions completed for clients to date that illustrate the huge scope of possibilities for layouts and finishes.

- 1 Outstanding natural light throughout interior courtesy of panoramic windows.
- 2 Choice of flooring options including carpet, parquet or timber laminate in main deck. Carpet through lower deck cabins as standard.
- 3 High-set dining table that can seat 10 pax with superb views.
- 4 Direct door to foredeck, offering convenient access to fore lounge and anchoring systems, while providing additional natural ventilation throughout main deck.

INTERIOR



- 1 Alternate layout option with lounge area in place of internal helm station.
- 2 Fully equipped bar to starboard in lieu of dining table. Dining table located to port adjacent to lounge in this version.
- 3 Floorings, linings all optional. Pictured veneer above is Alpi (available as an option for additional fee and has a variety of grains, colors and designs).
- 4 Ambient lighting and ceiling panels in premium synthetic leather.

GALLEY



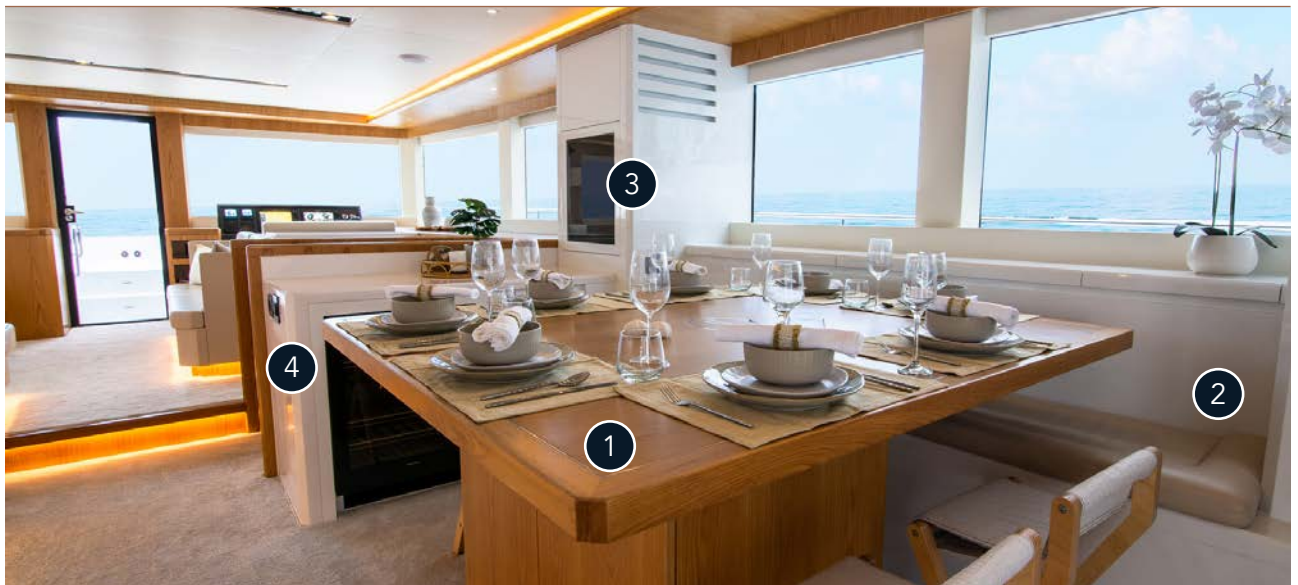
Galley configuration, finishes and appliances can be customised to each client's desired specifications.

- 1 3 x double draw fridge / freezers (144 L each), ideal for extended cruising.

2 4-unit induction hob with overhead hood.
- 3 Combination oven/microwave.

4 BLUM drawer systems and hinges throughout. Dishwasher and wine cooler also included.

DINING



- 1 Sliding dinette table.

2 Upholstered bench seating with hidden storage.
- 3 Liquor cabinet

4 Wine cabinet.

FORWARD LOUNGE



- 1 Elevated lounge with facing sofas and floating coffee table.
- 2 Concealed motorized blinds on all main deck windows.
- 3 Convenient access to foredeck lounges and for anchoring/mooring operations.

MAIN DECK HELM STATION



- 1 Standard lower helm station with 2 x 12" Raymarine Axiom Pro monitors and navigation instruments.
- 2 Roca windscreen wiper
- 3 Double helm seat in synthetic leather.

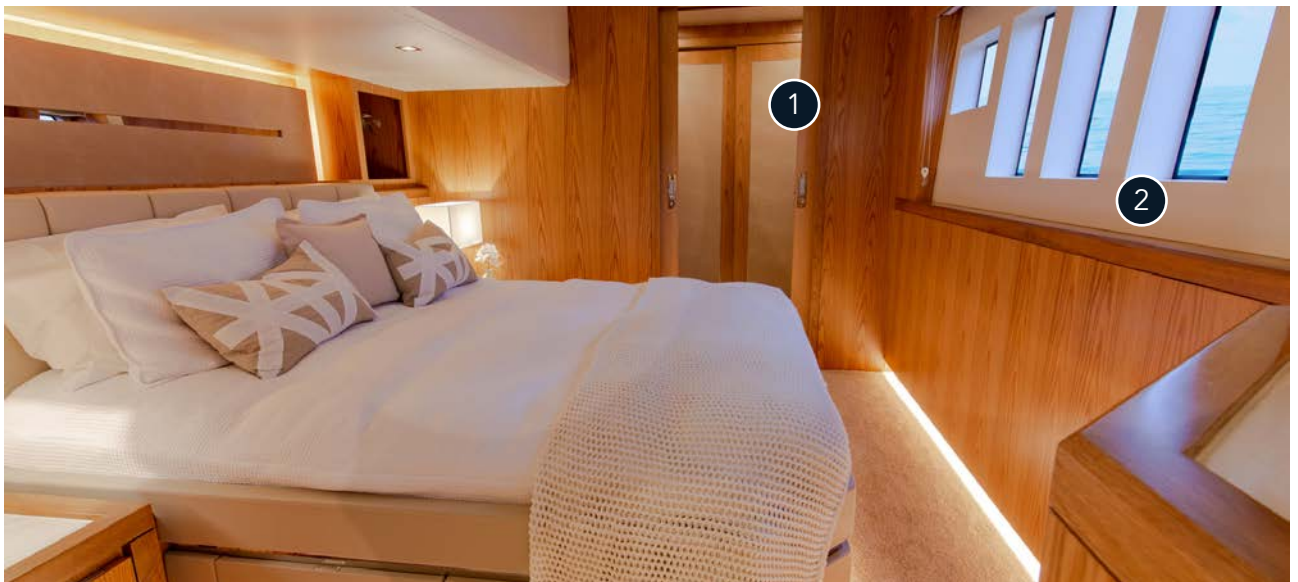
MASTER SUITE



1 Full walk-around queen-sized bed with synthetic leather bedhead and panels.

3 Spacious storage drawers concealed under the master bed.

2 Lockable sliding door on stairwell for optimal privacy.



1 Walk-in dressing room with closet storage and mirror.

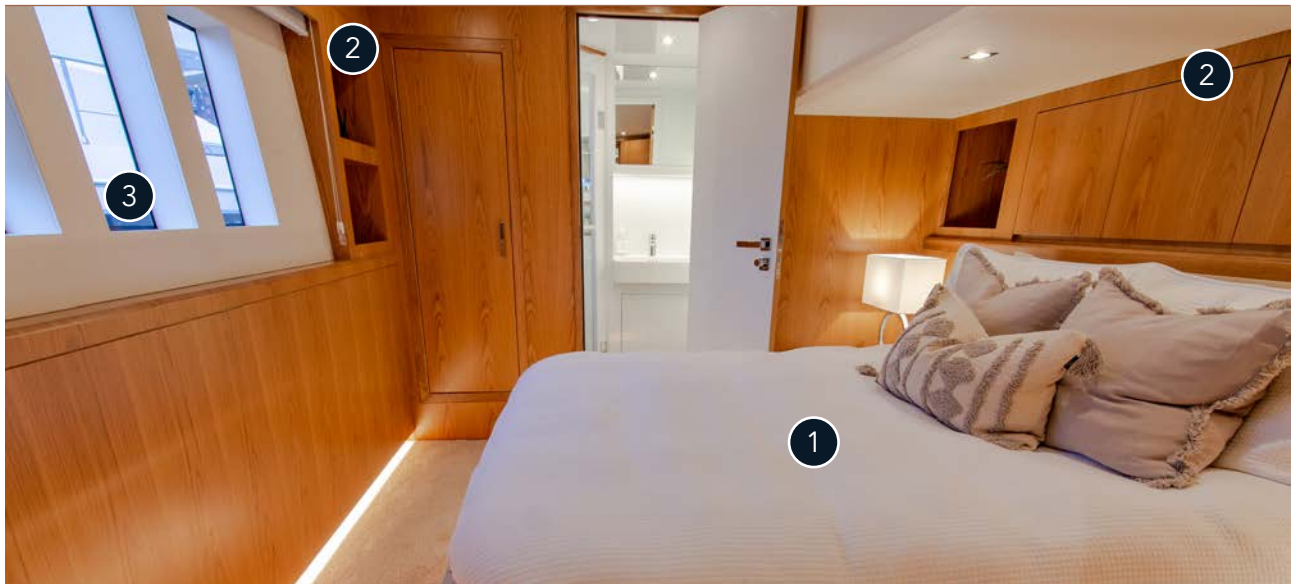
2 Large hull windows for excellent sea views.

MASTER ENSUITE



- 1** Spacious vanity with double sinks and storage behind mirrors and below vanity top.
- 3** Ample storage space or can be configured for optional slide-out television.
- 2** Dressing table/desk with upholstered seat.

PORT GUEST CABINS



- 1** Walk-around double beds with memory foam mattresses and upholstered in synthetic leather.
- 3** Large windows for natural light and overhead hatch ventilation.
- 2** Shelves and ample drawer and closet space.

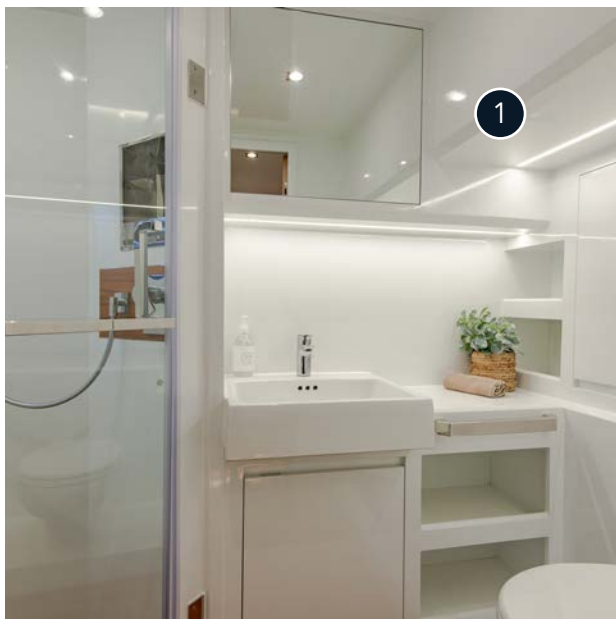
STARBOARD FORWARD CABIN



1 Twin bunks available in forward hulls, ideal for families or as crew accommodation with separate bow access. This area can also be configured as laundry room or additional storage.

2 Storage shelves on adjacent wall.

3 Deck hatch overhead for ventilation.



GUEST ENSUITES

1 Each guest cabin enjoys its own private ensuite featuring a vanity with storage behind overhead mirror and under sink, electric toilet, walk-in shower with teak grate flooring, and a hull window and overhead deck hatch for natural ventilation.

This document is effective at the date shown and replaces and delete any previous edition with the same topic.

To continually improve its models, ILIAD Catamarans reserves the discretion to produce on its own boats all the suitable variations, also in waiver to the specifications contained in brochures, guides, price lists, technical files, websites, advertising, media articles and in every other publication, without notice.

ILIAD Catamarans models are offered to the world market, and for this reason they can be equipped with standard and optional equipment that varies from region to region. The manufacturers and models of all the models' appliances, audio-visual and technical, hydraulic, electronic equipment etc presented in this document and in any other promotional material (brochures, price lists, technical files, websites, advertising, media articles, boat show material etc) are not binding as the manufacturers/suppliers of these products can modify or revoke the models at any moment without warning.

These products, installed on board by ILIAD Catamarans are selected by the company for their superior performance and quality, as well as on the basis of their availability on the market during the production of the boats. The characteristics and specifications presented are not contractually binding. Performance data is declared in good faith, however are purely approximate and indicative, and data is not legally binding with no guarantees given on speeds and fuel consumption due to various factors that can affect these performances (weather, loadings, sea state, fuel quality, propellor condition, and hull cleanliness etc).

The information, specifications and equipment stated in this document are subject to change without notice. This document is not contractual or legally binding.

Official ILIAD Catamarans dealers are listed on the company website at www.iliadcatamarans.com.